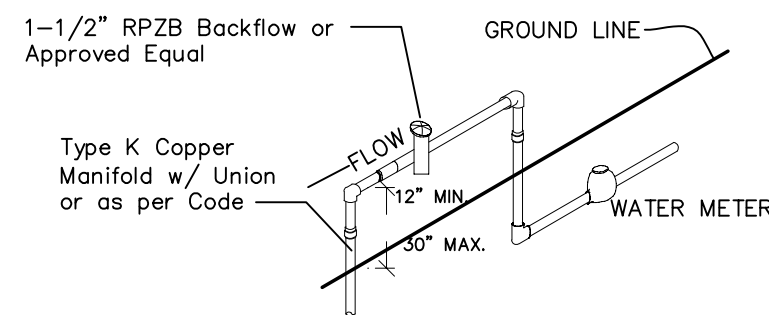


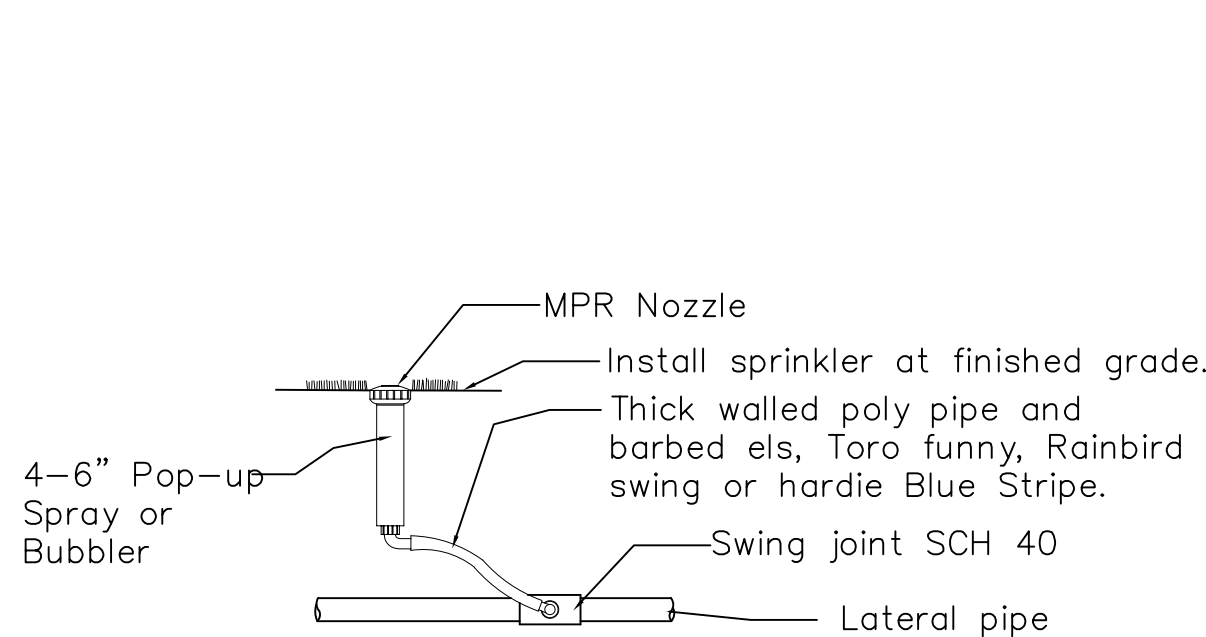
IRRIGATION PLAN

SCALE: 1/8" = 1'-0"



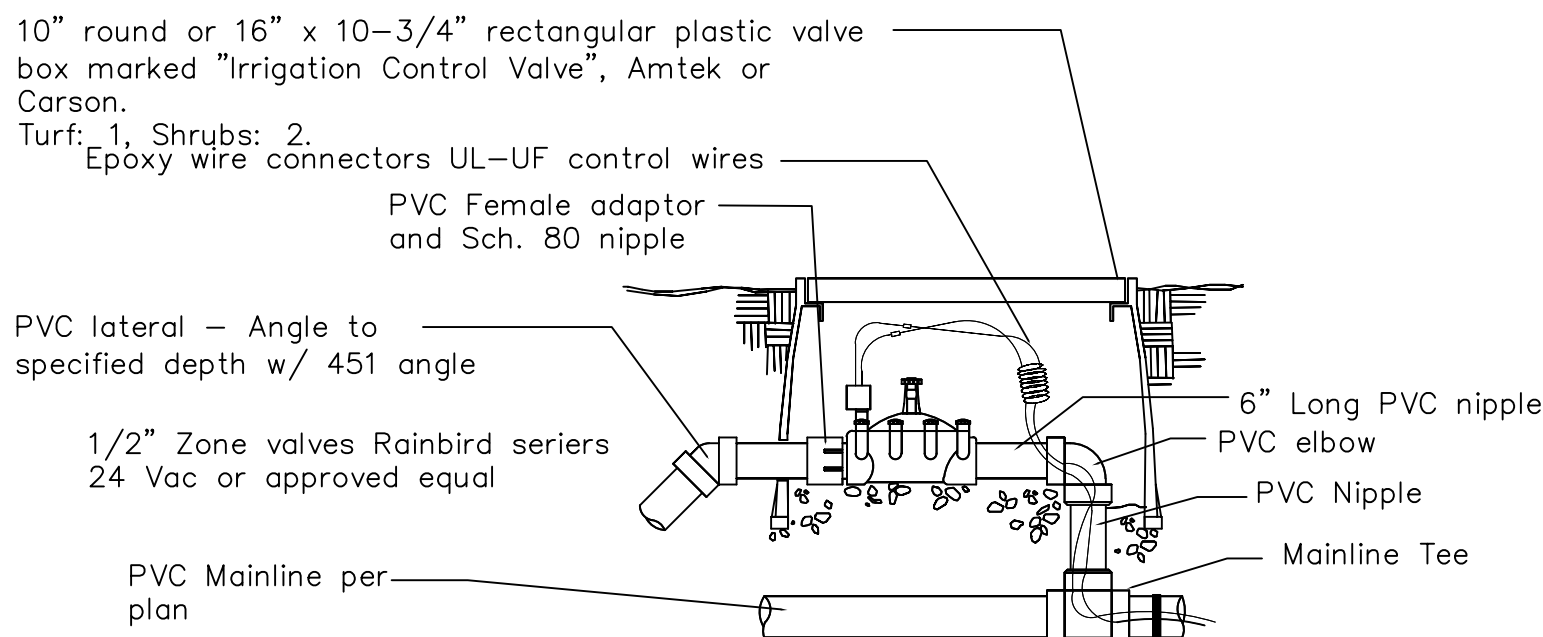
Point of Connection

NTS



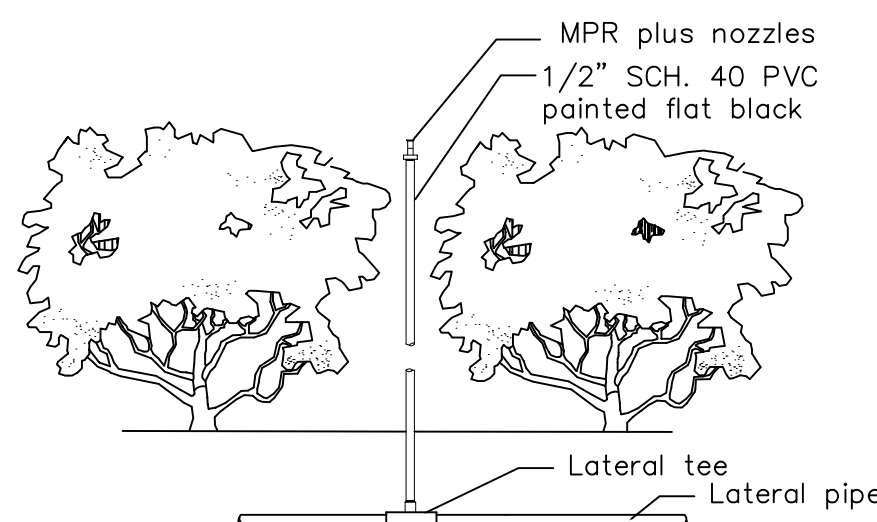
4 or 6" Pop-up Spray / Bubbler Detail

NTS



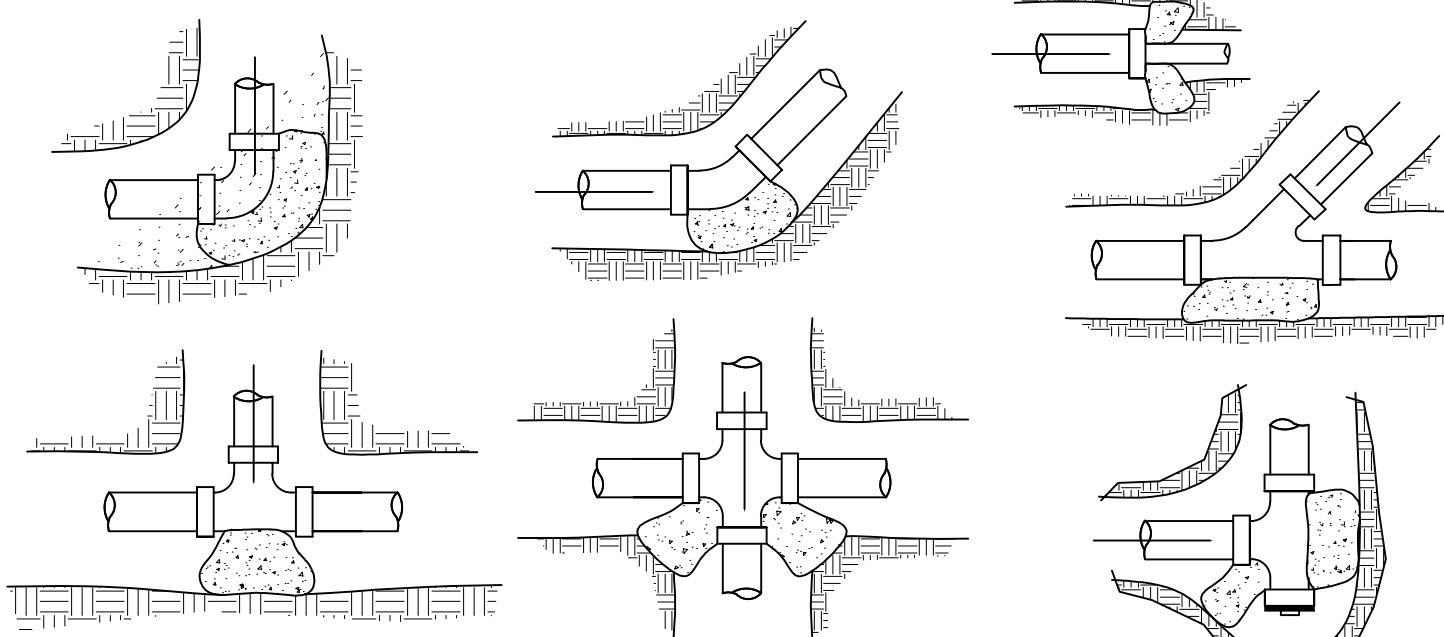
Zone Valve Detail

NTS



Shrub Riser Spray Detail

NTS



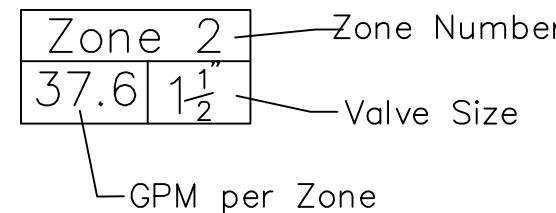
Main Line Thrust Blocks

NTS

IRRIGATION LEGEND:

- MAIN LINE - 1-1/4" Feed From Municipal Water Source
- LATERAL ZONE LINES - SDR PVC as noted
- ZONE BOUNDARIES
- QUANTITY 4 - CONTROLLER - Rainbird ESP Command Series Electric 4 station controller Digital Clock, 110 220 Starter 24 v coil, mounted on West facade of structure, with a Rain Check automatic rain sensor shutoff switch mounted outside on eave of structure.
- BACK FLOW: See Point of Connection Detail.
- ZONE VALVES - Toro 252 Series.
- QUANTITY 4 - IRRIGATION METER - 1" to meet City Code
- SLEEVES - Sch. 40, 2 Sizes Larger. NOTE - Pipe Size Shown is the Lateral Size, NOT the Sleeve Size
- 6" POP-UP SPRAY - Rainbird 1800 Series MPR Spray Nozzles as Required. NOTE - All of the below may not be used
- 15' Series - 15-Q-PC - 1/4" 15-T-PC - 1/2" 15-H-PC - 1/2" 15-TT-PC - 2/3" 15-TQ-PC - 3/4" 15-F-PC - Full
- 12' Series - 12-Q-PC - 1/4" 12-T-PC - 1/2" 12-H-PC - 1/2" 12-TT-PC - 2/3" 12-TQ-PC - 3/4" 12-F-PC - Full
- 10' Series - 10-Q-PC - 1/4" 10-T-PC - 1/2" 10-H-PC - 1/2" 10-TT-PC - 2/3" 10-TQ-PC - 3/4" 10-F-PC - Full
- 8' Series - 8-Q-PC - 1/4" 8-T-PC - 1/2" 8-H-PC - 1/2" 8-TT-PC - 2/3" 8-TQ-PC - 3/4" 8-F-PC - Full
- 4-SST-PC 4 x 18" 4-EST-PC 4 x 15" 4-CST-PC 4 x 30"
- 6" POP-UP FLOOD BUBBLER - Rainbird 1800 Series MPR Pressure Compensating Nozzles as Required.

SYSTEM DESIGN OPERATING PRESSURE = Between 35 and 40 psi.



- 4" POP-UP ROTOR - Hunter PGM Rotor W/ Appropriate Nozzle as Required.

IRRIGATION NOTES:

- Piping: Main Lines: PVC SDR 26, Class 160 Solvent Weld. Zone Lines: PVC: 1/2 in. and 3/4 in. are not used. Min. pipe is 1 in. 315 PSI: 1 in. = SDR 21. 200 PSI: 1-1/4 in. and greater = SDR 26, 160 PSI. All solvent weld. All end of the line unmarked pipe = 1 in. (min.). Sleeves and suction Line: PVC, SCH 40. Fittings: SCH 40 PVC. Fabrication: To manufacturers specifications. Use blue or grey PVC cement, square cut, clean and prime all joints. Allow all main lines to cure for 24 hours before pressuring. All pipe, fittings, and solvents to conform to latest ASTM specs. Depth of Lines: Main Line and wiring = 18 in. depth, min. Slewing under pavement = 24 in. depth, min. Suction Line = 24 in. depth, nominal. Zone Lines 1-1/2 in. and smaller = 10 in. depth, min. Control Wires: AWG 14 for all hot wires and AWG 12 for common. Solid copper type UF UL listed for direct burial. Run wires under main and tape every 20 feet. Run spurs, two min. Splice wires only in a valve box. All splices shall be moisture proof using Snap tie or DBY UL connectors. Common shall be white, hot shall be red or color coded. Spare shall be black. Run in conduit where no Main line runs. Backfill all trenches free of debris, compact to original density, flush all lines, use screens in all heads, adjust heads for proper coverage avoiding excess water on walls, walks, etc. All details are graphically shown only. All quantities shall be verified by the contractor prior to installation. It shall be the contractors responsibility to assure complete overlapping coverage. Any discrepancies shall be reported to the owner and landscape architect before proceeding. Codes and local regulations shall take precedence over these plans, it is the contractors responsibility to comply. The landscape architect reserves the right to make minor field changes, the contractor may field adjust spray nozzle selection to provide for proper 100% min. coverage. Provide owner with an accurate as installed plan(s) at completion showing main lines, wiring, valves, crossings, etc. using dimensions from fixed datums. Contractor shall verify all underground utilities prior to commencement of work. The perimeter irrigation and landscape may be required to be installed prior to either or both pump stations and all main line / valve wiring. A separate plan showing modifications and alternate water source will be provided prior to construction. The modifications will not impact upon the design intent or substantially affect the construction plan.



Wayne K. TONNING, RLA
4855 NW 92 Terrace
Coral Springs, Florida 33067
Tel: 561-414-8269 Email: w.tonning@tonningandassociates.com

DRWG. TITLE : IRRIGATION PLAN

PROJECT : TOWNHOMES SW 9th AVENUE POMPANO BEACH, FLORIDA

CLIENT : ETR ARCHITECTURAL WORKSHOP

Wayne K. TONNING
Tonning

Digitally signed by
Wayne K Tonning
Date: 2023.08.06
22:57:34 -04'00'

PROJECT NO. 23-132

DRAWN BY WKT

DESIGNED BY WKT

CHECKED BY WKT

DATE : 07-23-23

DWG. NO. LI-1

SHT. NO. 1 of 1

REVISION :

DRC
PZ23-12000050
03/20/2024